

celebrating

students

teachers

donors

community

excellence

30 years





everybody
benefits
from great
public schools

It was a year to celebrate!

With school back in full swing, it is a great time to reflect on the past year. The 2015-16 school year certainly is one to remember and celebrate, full of opportunities to commend our students on their amazing and inspiring accomplishments. We are extremely proud of our students and educators, and enjoy celebrating their successes during their journey with us and beyond. Generous donations made through the foundation continue to support children and families in the crucial effort to allow students to come to school each day equipped and ready to learn. We are fortunate to have developed strong relationships with committed community partners who provide not only financial and material assistance, but volunteer support to our students and schools. We celebrate our continuing partnerships with these individuals, businesses, and foundations that provide resources to support the basic needs and futures of our students. We celebrate the foundation and community efforts that have supported dozens of classroom grants, fellowships for teachers, and classroom and program initiatives.



With a personal stake in the community, our board is more committed than ever to exploring new ways to make a measurable difference in our children's education. *"It's not about what it is. It's about what it can become."*—Dr. Suess

Dena Johnston, Executive Director

We have much to celebrate at Lawrence Schools Foundation. We are proud of our LEAP program and all of our generous business partners that participate to make our schools stronger. Our dedicated educators should certainly be celebrated. Some of our most exciting moments are the days we are able to honor our teachers with a special award or an innovative teaching grant. There would be no celebration without our donors. We are fortunate to have many like-minded people in our community who value education and all of the empowerment that it brings to our children. Last but certainly not least we celebrate our students. From the preschoolers in our early childhood education program to the senior scholarship recipients, I am constantly inspired by the accomplishments of our young people.



Our future is bright here in River City. Let's celebrate!

Gail Vick, Board President

Our work is to bolster student achievement and teaching excellence in Lawrence Public Schools. Your support is instrumental in changing young lives at a time when our schools need us now more than ever. Please include the Foundation in your charitable giving. It's easy to give, and every amount is welcome!

a year to celebrate



STUDENT ACHIEVEMENT



SCHOLARSHIPS

In 2015, a total of more than \$51,000 was awarded to 43 graduating seniors in recognition of their achievement and to assist with post-secondary tuition. These scholarships are made possible by individuals, families and organizations, often in honor or remembrance of someone special and/or to encourage young scholars to pursue a particular field of study.

SCHOOL ASSISTANCE GRANTS

The School Assistance Grants is a program established by the Lawrence Schools Foundation to provide funding for defined areas of use in the Lawrence Public Schools for needs that are not being met with state or federal monies. All schools in the district are encouraged to apply for funds currently available and selections will be based on equity and merit as determined by a review committee. In 2015, \$3,416.94 was used to create a makerspace and ideation lab at South Middle School. The school was able to repurpose the library classroom and a previous office area to provide space for self-directed learning. The makerspace lab is available to all 590 students at South, as well as the school staff.



STUDENT CHAMPIONS

Hunter Goode and Claire Sanner in the 2016 graduating class at Lawrence Free State High School, and Amani Bledsoe and Kyleigh Severa in the 2016 graduating class at Lawrence High School were celebrated as student champions at the 2015 Community Education Breakfast. Students are selected each year for this special recognition by their counselors on the basis of scholarship and leadership, and also in 2015 on the basis of their athletic achievement.

OTHER CELEBRATIONS

COMMUNITY EDUCATION BREAKFAST

More than 500 guests joined us in September 2015 for the annual Community Education Breakfast. In his keynote presentation, Clint Bowen, University of Kansas assistant head football coach and 1990 graduate of Lawrence High School, entertained with stories of growing up in Lawrence and how his experiences as a young student shaped his adult life.

TGIFOLLIES!

For more than 25 years, the annual Foundation Follies has raised money for the Foundation's Innovative Teaching Grants and School Assistance Grants. Each year, nearly 150 talented teachers, staff and administrators put on a fabulous show and enjoy the opportunity to unwind in May as the school year draws to a close.

TEACHER EXCELLENCE

EDUCATOR AWARDS

Lawrence has fabulous teachers, and we want to make sure they know how much their talents and dedication are valued. More than \$18,000 was awarded to outstanding teachers in 2015.



- **Dedication To Education Award (\$5,000):** Cara McNorton, 5th grade teacher at Kennedy Elementary
- **Allen Press Distinguished Teacher Award (\$500):** Jo Huntsinger, biology teacher at Lawrence High School
- **Excellence In Teaching/Bobs Award (\$10,000):** Mike Jones, band director at Lawrence High School, and Rachel Dirks, orchestra director at Lawrence High School
- **Educators of the Year/ Golden Apple Awards (\$1,500 each):** Debra Williams, special education teacher at Sunset Hill Elementary, and Shakiyya Bland, math teacher at Liberty Memorial Central Middle School
- **Barbara Hodgson Dream To Achieve Award (\$100):** Linda Kuczka, 4th grade and Title 1 math teacher at New York Elementary School who retired after the 2015-2016 school year

INNOVATIVE TEACHING GRANTS

Innovative Teaching Grants are awarded each year to teachers or groups of teachers who implement innovative and unique projects for their students to enrich learning, enhance student achievement, and engage students in critical thinking and problem solving. In 2015, a total of \$16,557.23 was awarded for nine separate projects at elementary schools, middle schools and high schools. These projects are evaluated at the end of the funding cycle and can serve as pilots for other schools in the district.



DONOR-INSPIRED FUNDS

There's more! More than \$31,000 was allotted in 2015 for special programs such as Homegrown Lawrence, Outside for a Better Inside, the Tilson Heacock LHS Band Fund, the Tilson Heacock LHS Choir Fund, and Truity Education Fund Educator Awards.

celebrating

INNOVATIVE TEACHING GRANTS

Keep on Reading in the Summertime



Sunset Hill special education teacher **Debra Williams** knows that some elementary students are at risk to have their achievement test scores decline after summer vacation, so she applied for a

Lawrence Schools Foundation grant, which put three appropriately-leveled books into the hands of 35 targeted students during June, July and August of 2015.

The goal to reduce the loss of reading skills and prevent the development or widening of an achievement gap was met when the students returned in the fall. "The students who participated in the summer reading program in grades K-3 appeared to maintain scores from spring to fall and did not appear to lose any ground," Williams said.

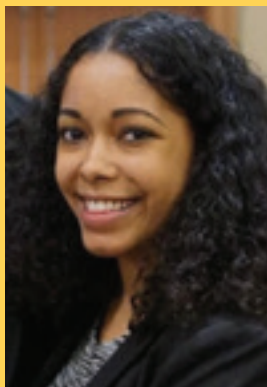
"With the help of the Lawrence Schools Foundation, The Keep on Reading Summer Reading Project provided high-interest leveled readers to a targeted group of students, along with continued teacher communication and encouragement over the summer months," Williams said. "Thank you, Lawrence Schools Foundation, for helping students close the summer achievement gap."

celebrating

RECOGNITION
ALL AROUND

A Champion for the Cause

With a 4.0 grade-point average, letters in basketball and track and an extensive list of extracurricular activities and volunteer work, **Brittany Ray** was recognized as a student champion at the Foundation's annual Community Education Breakfast in 2010.



"I was very honored to be recognized," Ray said. "It was a special moment because all of my teachers from preschool through the Lawrence Public Schools were so inspiring. The teachers in the district go above and beyond and have the students' best interest in mind. They want to see you succeed. I had that in all of my teachers."

When Ray was graduating from Northwestern University she nominated LHS social studies teacher, Valerie Schrag for the University's Distinguished Secondary Teacher Award — which honors high school teachers who had "transformative effects" on the lives of graduating seniors they once taught. Schrag was one of five teachers across the country to receive the award and was honored at the University's graduation.

"I nominated Ms. Schrag, but there were countless other teachers I could have nominated," Ray said.



Business and Community at Work for Our Schools

For more than 23 years, the mission of the Lawrence Education Achievement Partners (LEAP) has been to create and build community partnerships that support and enhance student achievement and success in the Lawrence Public Schools. Each one of our schools, including the Lawrence College and Career Center, has LEAP partners. Some businesses and community organizations are districtwide LEAP partners, which means that any school in the district may call on them for assistance. LEAP partners may focus on scholastic enrichment, such as reading to kids in class, tutoring or donating classroom supplies. Others volunteer to help at school events or make monetary or in-kind donations to support these events. Many of our LEAP partners sponsor Lawrence Schools Foundation signature events and purchase tables or donate goods and services to make the Foundation Follies and the Community Education Breakfast successful. Our LEAP partners enjoy being involved with the schools and learning from the students or teachers. The Lawrence College and Career Center offers new opportunities for LEAP partners to mentor and train students.

LEAP TOTALS (2015-2016 SCHOOL YEAR)

	School Partners	Districtwide Partners	All Partners
Cash Donations	\$ 10,205.84	\$ 21,761.54	\$ 31,967.38
In-kind Gifts	46,936.71	59,689.00	106,625.71
Volunteer Value			
Volunteer Hours	1,827	4,894.50	6,722
Value (\$23.56/hour)	<u>43,044.12</u>	<u>115,314.42</u>	<u>158,358.54</u>
TOTAL	<u>\$ 100,186.67</u>	<u>\$ 196,764.96</u>	<u>\$ 296,951.63</u>

Our LEAP Superstars

While we consider every single person who volunteers to support our schools a superstar, some organizations stand out because their combined support totals \$10,000 or more in a school year for their partner school, the district or the Lawrence Schools Foundation. Thank you to the following 2015-2016 Master LEAP partners:

Big Brothers Big Sisters—districtwide partner
Kansas Athletics, Inc.—districtwide partner
Lawrence Hy-Vee Stores—partners with Deerfield Elementary, Langston Hughes Elementary, Quail Run Elementary, Sunflower Elementary, Southwest Middle School, Lawrence Free State High School and Lawrence High School
Lawrence Memorial Hospital—partners with Pinckney Elementary and Project Search
Lied Center of Kansas and US Bank "Adventures in Imagination"—districtwide partners

Pelathe District, Heart of America Council, Boy Scouts of America—districtwide partner
The Merc Co-op—partners with Hillcrest Elementary, Sunset Hill Elementary and West Middle School
Truity Credit Union & Truity Education Foundation—partners with Langston Hughes Elementary, Prairie Park Elementary, Lawrence Free State High School, Lawrence High School and districtwide

2015-2016 LEAP PARTNERS

Broken Arrow

Central National Bank
Checkers
Pet World
Premier Martial Arts
Raising Cane's

Cordley

Capital City Bank
Cottin's Hardware & Rental
Dillons Stores–Mass. Street
Lawrence Noon Rotary Club

Deerfield

Hy-Vee–6th St.

Hillcrest

Body Boutique
Commerce Bank–Iowa Street
Freddy's Frozen Custard &
Steakburgers
Noodles & Company
Premier Martial Arts
The Merc Co-op
Wal-Mart–Iowa Street

Kennedy

Dr. John H. Hay, D.D.S., Inc.
Independence, Inc.
United Way of Douglas County

Langston Hughes

Dillons Stores–6th & Wakarusa
Hy-Vee–Clinton Parkway
J&S Coffee
Truity Credit Union
University National Bank

New York

Altrusa
Cottin's Hardware & Rental
Emprise Bank
Kiwanis Club
Lawrence Breakfast
Optimist Club
Lawrence Wesleyan Church
Stevens & Brand, L.L.P.
Western Star #1 Masonic Lodge

Pinckney

Big Heart Pet Brands
Gould Evans Associates
Lawrence Memorial Hospital

Prairie Park

Capitol Federal Savings
Hy-Vee–Clinton Parkway
Peoples Bank–Harper Street
Truity Credit Union

Quail Run

Berry Plastics
Hy-Vee–6th Street
Legends Dental Center
Pioneer Ridge
Premier Martial Arts

Schwegler

Dairy Queen–Iowa Street
Premier Martial Arts
Raising Cane's
Runza
Schlumberger

Sunflower

Central National Bank
Freddy's Frozen Custard &
Steakburgers
Hy-Vee–Clinton Pkwy
Premier Martial Arts

Sunset Hill

Meritrust Credit Union
Stephens Real Estate
The Merc Co-op

Woodlawn

Bowersock Mills &
Power Company
First State Bank & Trust
ICL Performance Products
Noodles & Company

Liberty Memorial Central Middle School

Cottin's Hardware & Rental
KU Natural History Museum
Lawrence Arts Center
Rodrock Chiropractic &
Acupuncture
The Summit
Wakarusa Valley Credit Union

South Middle School

Mainstreet Credit Union
McDonald's of Lawrence
Printing Solutions
Raising Cane's
Sigler Pharmacy
UNI Computers

Southwest Middle School

Bartlett & West Engineers, Inc.
Hy-Vee–Clinton Parkway
McDonald's of Lawrence
t.Loft

West Middle School

Commerce Bank–Iowa Street
Sonic–6th Street
t.Loft
The Merc Co-op

Lawrence College and Career Center

Amarr Entrematic

Lawrence Free State High

Amarr Entrematic
Capital City Bank
Central Bank of the Midwest
Commerce Bank–
Wakarusa Street
Eileen's Colossal Cookies
Go Driving School
Hy-Vee–6th Street
McDonald's of Lawrence
t.Loft
Therapy Works
Treasor Architects
Truity Credit Union

Lawrence High

Amarr Entrematic
Capitol Federal Savings
Commerce Bank–23rd Street
Go Driving School
Gould Evans Associates
Hallmark Cards
Hy-Vee–Clinton Parkway
Pinnacle Career Institute
Raising Cane's
Truity Credit Union

Districtwide– Early Childhood

Dr. James Otten, D.D.S.
Dr. Sharon Michel Green, O.D.
Jayhawk Breakfast Rotary

Districtwide–Fine Arts

KU Theater
Lied Center of Kansas
Theatre Lawrence
US Bank

Districtwide–Community Connections/C-Tran

Applebee's–Iowa Street

Districtwide–Project Search

Lawrence Memorial Hospital
KU Dept. of Human Resources
Joblink, a Division of
Cottonwood
United Way of Douglas County

Districtwide

Applebee's–Iowa Street
Best Western Lawrence
Big Brothers Big Sisters
Boys and Girls Club
of Lawrence
Briggs Auto.com
Chili's
CiCi's Pizza
Douglas County Fire & Medical
Eileen's Colossal Cookies
Epic Fun, LLC
First Student
Hastings
Hot Box Cookies
Kansas Athletics, Inc.
Lawrence Habitat for Humanity
Lawrence Police Department
Lawrence Public Library
McAlister's Deli
Minuteman Press
Montana Mike's
Office Depot
Pelathe District,
Heart of America Council,
Boy Scouts of America
Pet World
Printing Solutions
Royal Crest Lanes
Super Target
The World Company
Truity Credit Union
23rd Street Brewery
UNI Computers
Wal-Mart
Watkins Museum of History
Zarco USA, Inc.

2015 FOUNDATION FINANCES

	2015	Last Five Years
Donated:		
Via Campaigns and Events	\$ 151,598	\$ 1,043,775
For Specific District Betterment Programs	\$ 218,862	\$ 1,325,166
Granted:		
To District for Programs and Support	\$ 261,039	\$ 1,517,197

Statement of Financial Position as of December 31, 2015

ASSETS

Cash & Equivalents	\$ 221,743
Investments at Fair Value	1,593,315
Total Assets	\$ 1,815,058

LIABILITIES AND NET ASSETS

Current Liabilities	\$ 55,692
Net Assets	
Endowed Funds	497,584
Temporarily Restricted Funds	720,790
Unrestricted Funds	540,992
Total Net Assets	\$ 1,759,366
Total Liabilities and Net Assets	\$ 1,815,058



2015 FOUNDATION DONORS

MASTERS

(\$10,000 and Above)

Brown, Larry
Dann, William
Davidson III, John and Shirley Schaeffer
Douglas County Community Foundation
Ethel and Raymond Rice Foundation
Lawrence Public Schools
Silicon Valley Community Foundation

SCHOLARS

(\$5,000 to \$9,999)

Advanco, Inc.
Gray, Captain and Katharine
Hillcrest PTO
Truity Credit Union
Yellow Chair Foundation
Aetna, Inc.

HONOR SOCIETY

(\$1,000 to \$4,999)

Becker, Frank
Benz, Bob
Bill Self's Assists Foundation
Billings, Beverly Smith
Buhler, Mark and Marsha
Capitol Federal Foundation
CEK Insurance
Dannevik, Robert
Davis, Robert and Linda
Denning, Dale
Dinsdale, Robert and Katherine
Dobski, Tom and Marilyn
Dole, Robert J.
Douglas Co. CASA Program, Inc.
Drahozal, Christopher and Kaye
Elmore, John and Rosy
First Management, Inc.
First Student
Gene Fritzel Construction Co., Inc.
Gish, Stephen and Bobbie Glass, Stephen E.
Golden, Joan and Webster
Gollier III, Robert A.
Gould Evans Associates
Hy-Vee, Inc.
Imber, Jane and Michael
Intrust Bank
Johnson, Bob and Pauline
Johnson, Monte and Kay
Johnson, Robert, Jr. and Jana
Kansas Athletics, Inc.
KU Endowment Association
Lathrop, Bill and Bonnie
Lawrence Memorial Hospital
LHS Band Parent Group
Lifetouch National School Studios
Mainstreet Credit Union
Marsh & McLennan Agency
McBride, Mike and Marilyn
McCown Gordon Construction
McDonald's of Lawrence
Moore, Bob and Marna
Moore, Martin and Durand Reiber
Murray, Thomas V.
Nabholz Constructions Services
New Generation Society of Lawrence
O'Connor Co-Piller Foundation
OrthoKansas, P.A.
P1 Group, Inc.
Pur-O-Zone, Inc.
Sabatini Architects Inc
Schriner, Dan

Self, Bill and Cindy
Senecal, Robert and Evelyn
Smith & Boucher
Soto, Bert and Darcey
Stephens, Mr. and Mrs. Robert
Stevens, Linda and David
The Shelter, Inc.
Thompson, David and Maria
US Bank
Vick, Gail and Kevan
Warren-McElwain Mortuary
Zenger, Sheahon and Pam

LEADERS

(\$500 to \$999)

Aldridge, Allison
Alexander Open Systems, Inc.
Allen Press, Inc.
American Fidelity Assurance Company
Anderson, Christopher
Auto Exchange
BG Consultants, Inc.
Bureau of Lectures Inc
Capital City Bank
Carmody, Tom, Kay, Tyler and Jeff
Central Bank of the Midwest
Central National Bank
Commerce Bank
Dehart, Wilma and Frank
Doll, Richard
Emprise Bank
Fambrough, Preston
First State Bank & Trust
Fridell, Jeanne and Max
Gautt, Sandra
Hallmark Cards, Inc.
Henderson Engineers
Hill's Pet Nutrition, Inc
Hollis and Miller Architects
Jayhawk Power Systems, Inc.
KU School of Business
KU School of Education
KU School of Engineering
Laird Noller Automotive
Lopes, Steve and Lois
Meadowbrook Investors, LC
Meritrust Credit Union
Midwest Exterminators, Inc.
Mize Houser & Company, P.A.
Momenta, P.A.
Paley Properties
Professional Engineering Consultants
Ross, Mary
Schworm, Richard (Marc) and Allene
Shanmugam, Kannon K. and Victoria K.
Shirk, David and Karen
Srinivasan, Saroja
Stephens Real Estate
Stevens, Keith
Storm, Christopher and Amanda
Wertzberger, Ken and Annette
Wester Energy, Inc.

BENEFACTORS

(\$100 to \$499)

Allenbrand, Shirley
Amon, Angela
Anderson, Brian and Vickie
Anderson, Nancy
Armitage, Kenneth and Katie
Atchley, Paul
Atchley, Ruthann
AUL Appraisal Services
Baker, Phillip and Betty
Bakerink, Larry
Baloga, David and Andrea
Barr, Paula
Barron, Antonio
Bartini Architects Inc
Schriner, Dan
Baska, Lara
Bayer, Margaret
Becker, Charles and Katherine
Becker, Tammy
Bernstein, Bonnie and Robert
Bieri, Margaret
Blaser, Charles and Delores
Bodley, Lawrence and Lynne
Bonner, Sara
Boon, Jean Pierre
Bowen, Kathleen
Bruner, Kathy and Steve
Buchanan, Rex
Buck, Lindsay
Busby, Anna and William H.
Butler, Kate
Campbell, Patricia
Carter, Wayne and Julie
Catlin, Jerree
Cigler, Allan and Beth
Clark, Valerie
Cohen, Michael
Colliers International
Comstock, Laurie
Conyers, Carladyne Knox
Craft, Lucinda
Daicoff, Margaret
Darst, Rebecca
Deboard, Lysette and Jeremy
Deerfield Elementary PTO
Deiser, Jay
Delta Zeta Alumnae
Dolph Simons Family Fund
Dunn, J.E.
Dunn, Janice
Educational Credit Union
Esau, Susan and John
Farley, Emily
Fevurly, Dr. Chris and Jane
Fincher, Jill
Folsom, Laurie
Friesen, Dale and Connie
Fulbright, Thomas and Mary
Gadt, Larry
Gage, Martha
Gavosto, Estela
Golf Course Superintendents Association
Glendening, Dian
Graham, Sharon
Green, Patrick
Hall, Arthur and Susan
Hampton, Carol
Harkin, Jeff
Harrison, Jonathan
Hatesohl, Brenda and Kent
Heeb, Karen L.
Heffernan, Steve and Shirley
Heider, Mark and Valecia
Helmstadter, Nancy
Henderson, Mark and Susan
Henry, Rick
Herron, Don and Jene
Hiebert, Gunda
Hoey, Aline
Hoof Hearted Investments LLC
Howell, Mark and Lori
Huber, Julia and Michael
ICL Performance Products LP
Immel, Sheila and John
Ingram, Rick and Nancy Hamilton
Jack Elena Honda
Jacobs, Sheryl and Robert
James, Mindy
Jewell, James and Carlsen
Jewell, Kristi
Johnson, David E.
Johnson, Gerylyn
Johnson, Paul and Sandra
Johnson, Peggy
Johnson, Thomas H.
Joy, O Maurice
Kabley, Wes

Kauffman Foundation
Matching Gifts Program
Keller & Associates
Kelly, Patrick and Amy
Ketzler, Lesley T.
Kiefer, John and Helen
Kimball, William
Kirk, Tom and Michelle
Kline, Mary
Knauss, Brad
Kobler, Angelique
Kreicker, Kim and Arla Jones
Kreider, James
Kumar, Sanjeev
Kwan, Derek
Kwan, Peter and Jenny
Landplan Engineering
Lattin, Dana and Thomas Waechter
Law, Brian
Lawrence Chamber of Commerce
Lochmann, Hunter
Locke, Sammie and Carl
LPRE LLC
Luckey, Peter and Linda
Lungstrum, John and Linda
Mandigo, Jim and Carrie
Mango, Sue
Marples, Douglas and Martha
Maxey, Linda
McAdoo, Ryan
McBride, Matthew and Gina
McCaffrey, Brian
McElwain, Larry and Susan
McEwen, Terry
McGrew Real Estate Inc
Meadowlark Garden Club
Melton, Myron and Lisa
Midwest Concrete Materials
Midwest Regional Credit Union
Miller, Paula and Cameron
Mock, Tim
Montgomery, James
Moore, Robert
Morgan Quitno Corporation
Morgan, Scott and Kathleen
Morse, Adina
Motoyama, Yasuyuki
Newman, Leslie
Nitz, Barbara
Nossaman, Cara
Oelschlaeger, Marcia
Oliver, Kenneth and Anna
Olson, Gary and Mary
Orive, Maria
Orozco, Michael
Paine, Kay and Roger
Pasik-Duncan, Bozenna
Peggy Johnson and Associates
Pennybaker, Kent and Janet
Peoples Bank
Pepin, Paula
Petron, Robert and Margaret
Pines International, Inc.
Planet Aid Inc.
Praeger, Mark and Sandra
Preut, Mark
Pritchard, Shea
Pyle, Margaret
Reber, Richard and Gail
Reeb, DP and RM
Rexroad, Angela
Riggins, Stacy and Bill
Robinson, Jason
Robinson, Linda and Scott
Robinson, Mark
Rock, Jane
Roper, John and Valerie
Rute, Larry
Santelli, Maren
Scheibler, Barbara
Scheibler, Ty
Schmidt, Gregory and Eva

celebrating

TEACHER RECOGNITION

Instilling the Importance of a Lifetime of Learning



Instilling the importance of a lifetime of learning into the fifth-graders at Kennedy Elementary made **Cara McNorton** (pictured above, second from left), an excellent choice as the recipient of the Foundation's annual Dedication to Education Award in 2015.

"It is my goal to teach kids to be independent of me and to continue their learning even when I am not with them," McNorton said. "My hope for them is they always know I believe in them, because sometimes knowing that someone believes in you is just what you need to take the next best step."

McNorton has taken extra steps to prepare her students for their futures by creating a College Bound Program, which includes researching schools and visiting Johnson County Community College, creating a scholarship through the Foundation for Kennedy alumni and starting a Kennedy alumni group.

"The support of the Foundation makes dreams happen through a wide variety of programs designed to enrich education for Lawrence students," she said.

celebrating

STUDENT SCHOLARSHIPS

A Long-term Investment



When **Jamison Montes de Oca** received the Stan Roth Science Scholarship administered by the Lawrence Schools Foundation in his senior year of high school, he admitted he may not have appreciated the gift at the time.

"I didn't fully understand what it would mean to getting me to where I am now," Montes de Oca said. "I probably took it for granted at the beginning, but the scholarships have gone a long way and helped make me who I am today."

This past spring Montes de Oca graduated from Baker University with a degree in biology and a minor in chemistry. He is currently in the University of Kansas Pharmacy School and en route to fulfilling his dream of helping others by serving in the health care field.

"Scholarships are not only an investment into students' lives, but a long-term investment as students use the scholarships to learn and transform society for the better," he said.

Schwartzburg, Margaret
Scouffas, Anthea
Shepherd, Jean F.
Shultz, Jeanette
Silver Lake Bank
Simons, Dan and Trisha
Sollars, Gary and Connie
Spradlin, Rita and Joe
Stahmer, Melinda
Stevens & Brand, LLP
Stomberg, Eric
Stubblefield, Anna
Tammy Cates, Inc.
Tan Bhala, Kara
Teeter, Ron and Deb
Tegna
Teresa Wolff Corp.
The World Company
The Write Design
Thomas, Lynisha
Thomas, Merle and Sharon
Thompson, Brandon
Tilghman, Benjamin
and Marilyn
Treonor Architects
Turney, Austin
Tuttle, Bill and Kathryn
Van Leer, Tim
Warren, Steven F.
Weaver's
Weinberg, Jeff and Mary
Wendel, Doug
Wilkinson, Saunders &
Anderson, D.D.S.
Williams, David and Jeanne
Worris, Robert
Woods, Heidi
Zicker, Steven

FRIENDS (up to \$99)

Achten, Christina
Adams, Eddie
Adams, John and Janet
Affalter, Daniel and Diannia
Aguirre, Rosina
Ahlvers, Staci
Alberding, Deborah
Aldridge, Cara
Aligo, Linn
Allen, Brad
Almanza, Mary
Amont, Deena M.
Anderson, Charlotte
Anderson, Jill
Anderson, Kathy
Anderson, Kendra
Anderson, Ron and Jill
Andrews, Vickie
Angell, Steven
Armstrong, Carol
Armstrong, Rebecca
Ash, Diane
Austin Janousek, Keri
Auwarter, Lawrence E.
Babin, Renee
Baggett, Jaime
Bailey, Anne and Richard
Baker, Jamie
Barker, Thomas
Barnes, John
Barnes, Mary
Bass, Lynda
Bateman, Jane
Battaglia, Julie
Beals, Victoria
Beasley, Mary
Becker, Kay
Beeson, Jessica
Bellucci, Julie
Belot, Lydia
Beltch, James
Bevan, Dean
Beyer, Rita
Billings, Sarah
Binns, Khalila
Bland, Shikiyya
Bloom, Paul and Sheila
Boatright, Deborah
Boatwright, Cheryl
Bode, John
Bolster Wesley, Christine
Bonnewell, Tiffany

Borger, Daniel
Bott, Jason
Bouley, Janet
Bowen, Mary
Bowman, Margaret
Boyle, Julie
Brackman, Barbara
Bradfield, Brian and Kristina
Branson, Charles
and Kathryn
Brents, Donald
Brickie, Margaret
Brown, Breanna
Brown, Christina
Brown, Dennis
Brown, Ray and Kim
Browning, Linda
Brucker, Debra
Brumfield, Christina
Buck, Lindsay
Buek, Kelsey
Burgess, Dennis
Burke, Kim
Burks, Lizette
Burnett, Deena
Bushman, John
Byers, Lori
Campbell, Leslie and Scott
(in honor of Stan Roth)
Carlson, Anita
Carter, Becky Burgin
Carter, Morgan
Carttar, Jennifer
Casteel, Carol
Cates, Richard and Emily
Cathedral of the
Sacred Heart of Jesus
Catlin, Jennifer
Catt, Sherrill
Chaffin, Rhonda
Chapman Froese, Marci
Chapman, Mary and
Howard Hawkins
Chavez, Dionne
Cinnamon, Scott
Cistola, Alyson
Clarkson, Jennifer
Clements, Kimberly
Clover, Melissa
Coffey, Patricia
Coggins, Margaret
and George
Coleman, Cheldon
and Mary Anne
Collins, Connie
Collins, Jeannette
Colman, Lauren
Comfort, Jared and Rochelle
Complete Construction
Conforti, Nicole
Conover, Marc
Coonfield, Lauren
Cooper-Cornejo, Robin
Cordes, Heather
Corn, Nicole
Cox, Alexander
Cox, Helen
Cox, Johannah
Creed, Coleen
Crenshaw, Lucinda
Cropp, Clark and Linda
Cropp, Melanie
Crowe, William
Culbertson, Jennifer
Cummins, Eve and Jim
Currey, Karen
Dabney, Annette
Daniels, Gail
Daniels, Sharon
Daniels, Stacie
Davis, Christopher
Dawson, Donald
Day, Jennifer
Degarmo, Nancy
Denning, Gerald L.
Desmond, Jillian
Devenport, Shauna
Devin, Joann
Devin, Sadie
Devin, Samrie
Dewitt, William
Dillon, Katherine
Dingus, Robert

Dipman, James
Donohue, Timothy
and Paula
Doolittle, Anna
Doster, Sydney
Downing, Leslie
and Matthew
Dreiling, Alica
Drennan, David
Drinkhouse, Christine
Dufour, Megan
Dunlap, Julie
Dunlop, Margaret
Durgan, Robert
Durga, Terri
Dye, Brandon
Dye, Catrina
Dykes, Dianna
Edgcomb, Therese
and Mark
Edmonds, Jason
Edwards, Kyleigh
Ellett, Ryan
Epp, Edwin
Epperson, Megan
Estrada, David
Everett, Edward
and Christine
Fahy, Elizabeth
Faler, Baileigh
Felich, Rachel
Fernandez, Danira
File, Sandra
Finkbner, Christopher
Firms Hubert, Kathleen
Fitzmorris, Jillian
Flannery, Joseph and Paula
Flessing, Douglas and Cheryl
Flohrschutz, Amy
Flynn, Jani
Folsom, Laurie
Forbes, Chris and Barb
Forkenbrock, Scott
Forsythe, Charles
Fox, Ed and Ikuko
Francisco, Marci
Frantz, Catherine
Free State Faculty Club
Frink, James
Fry, Pam and Hank
Frye, David
Frye, Debra
Fuller, Molly
Fullerton, Janice
Gabel, Angela
Gabel, Elizabeth
Gamble, Kimberly
Garner, Robert
Gates, Kathleen
Gatti, Melody
Genosky, Rachel
Georgie, Jennifer
Gerrond, Erica
Gill, Tyler
Gillam, Terri
Gilmore, Rachel
Gipson, Karen
Gleason, Michelle
Glennon, Carly
Gleue, Alan
Glidewell, Catherine
Goodell, Karen
Goolsby, Charles
Gorman, Amanda
Gorman, John
Gorup, Jennifer
Gossett, Barbara
Graber, Myron
Graham, Aften
Grammer, Laura
Grant, Wendy
Gray, Margaret
Green, Jessica
Greene, Megan
Greenwood, James
Greenwood, Lisa
Gross, Leann
Grzenda, Joseph and Patricia
Gutierrez, Carolina
Hagan, Toni
Hague, Sally
Halsted, Sunny
Hamlin, Jeff

Hancock, Mallory
Harkin, Jeff
Harmon, Marcel
Harrell, Brittany
Harrell, Carol
Harrell, Kevin
Harrington, Melissa
Harrod, Lisa
Hart, Kelly
Hase, Kristin
Hatcher, Paula
Hatfield, Tom
Haworth, Gary and Allison
Hazlett, Marjorie
Heath, Devin
Heffernan, Andrea
Hegeman, Marisa
Hegeman, Marsha
Heider, Valeria
Heim, Kenna
Heiman, Shane Patrick
Helling, Thomas and Kristen
Henry, Katherine
Henry, Leah
Herbel, Linda
Hernandez, Debra
Herrill, Kristin
Hertlein Czarnecki, Keri
Hess, Kerri
Hess, Rodney
Hill, Gina
Hill, Karen
Hill, Kristi
Hilliard, Catherine
Hobbs, Denise
Hochman, Laura
Hoffman, Timothy and Abby
Hoffommer, Amy
Holland, Meredith
Holland, Tom
Holt, Frances
Hoover, Melinda and Kelly
Houston, Peter
Hoy, Krista
Hudson, Valerie
Hughes, Cheryl
Hundley, Jay
Hunt, Brad
Hunt, Christy
Hunter, Erica
Hurt, Megan
Husted, Deborah
Hyde, Beverly
Hyde, Karen
Hymer, Michael
Ireland II, Douglas
Israel, Londa
Iversen, Bethany
Jackson, Amber
Jackson, Anna
Jackson, Clarissa
Jackson, Nancy
Jacobsen, Michelle
Jamison, Emily
Janousek, Guy
Jenkins, Jessica
Jennings, April
Jennings, Kimberly
Jensen, Michelle
Jevens, Jill
Jimboy, Charlene
Johnson, Carolyn P.
Johnson, Denise D.
Johnson, Denise L.
Johnson, Terri
Johnson, Trey
Jones, Arla
Jones, Bret
Jones, Brian
Jones, Keith
Jones, Lauren
Jones, Lisa
Jones, Nicole
Karasek, Daniel
Katt, Ronda
Katzenmeier, Stacy
Kaufman, Sonja
Keary, Deborah
Keesee, Douglas
Keller, Erica
Kelly, Christina
Kendrick, Lynn
Kennard, Perry

Kennedy, Jodi
 Kennedy, Patty
 Kepler, Jana
 Kimball, Michelle
 Kimball, Robert
 Kimball, Shannon and Jason
 King, Kathryn
 Kirk, Tom and Michelle
 Klingele, Jennifer
 Koehn, Jana
 Koenig, Laura
 Kopp, Kristy
 Kramer, Duwayne
 Kramer, Penny
 Krape, Darryl and Harma
 Kraus, Darcy
 Kraus, Holden
 Krause, Molly
 Kreickler, Kim and Arla Jones
 Kuczka, Linda
 Kyriakos, Sara
 Laing, Kristi
 Laing, Mallory
 Lam, Kin and Kristi
 Lamborn, Lori
 Lang, Donna Jo
 Larsen, Jacob
 Larsen, Jessica
 Larson, Jacob
 Larson, Lorna
 Lashley, Tawnia
 Lauxman, Keri
 Lavin, Paula
 Le, Amy
 Leggins, Kristin
 Lekey, Amy and
 Carrie Mershon
 Leuschen, Marci and Carl
 Lewin, Tom and Phyllis
 Lewis, Jacob
 Lewis, Jodi
 Liechti, Paul and Sandra
 Lietaert, Charles and Aesha
 Lisher, Robert
 Liu, Chang
 Locke, Debra
 Locke, Karen
 Lofflin, Heather
 Lohrenz, Caroline Marie
 Long, James
 Long, Sabrina
 Longino, Linda and Bob
 Lorenz, Patricia
 Lotton Barker, Danielle
 Lounsbury, Ann
 Lovelace, Mari and Colton
 Lovell, Amy
 Luna, Kendra
 Lyke, Lisa
 Lysen, Richard and Victoria
 Maack, Eric and Sylvia
 Maczuga, Margaret
 Maigaard, Paul
 Maisog, Jason
 Mallory, Kristin
 Malone, Marsha and Stephen
 Manda, Edward and Katherine
 Manes, Jason and Ashley
 Manley, Stephanie
 and Antonio
 Mannering, Linda
 Marks, Michael
 Martin, Andrew
 Martin, Benjamin
 Martin, Catherine
 Martin, Coleen
 Martin, Erin
 Martinez, Nicholas

Matthews, Sharon
 May, Dawn
 May, Rebecca
 Maykulsy, Vicki
 McAnarney, Amy and Mark
 McCaleb, Cindi
 McClarrinon, Marcia
 McCoy, Linda
 McCurdy, Mark and Julie
 McFall, Carol
 McGee, Diane
 McGinness, Steven
 McGrew, Mike and Chris
 McKellips, Claudean
 McKinney, Lori
 McLenon, Michelle
 McWhirt, Christie
 Medical Arts Pharmacy
 Meinig, Meaghan
 Melander, Kay
 Mellen, Brandon
 Merz, Connie
 Metsker, Erin
 Meyer Szelewycz, Kristina
 Meyer, Kathy
 Meyers, Brenda
 Meyersick, Cory
 Mickel, Jacquelyn
 Miescher Lerner, Jessica
 Miles, Courtney
 Miles, Sarah
 Miller, Allison
 Miller, Cathryn
 Miller, Richard W.
 Milton, Leslie
 Mitchell, Pamela
 Mitchell, Tina
 Monroe, Cathryn
 Monroe, Mike and Jerlyn
 Morgan, Teresa
 Morris, Catherine
 Morrison, Rhonda
 Mugridge, Ben and Carrie
 Mullenix, Kristie
 Mullins, Katie
 Murphy, Bridgid
 Murphy, Carrie
 Naughton, Patrick
 Neises, Kimberly
 Nelson, Debra
 Neuteboom, Patricia
 Newman, Molly
 Nicholson, Mindy
 Nicolet, Suzanne
 Niedenthal, Susan
 Nitcher, Hazel
 Nordling, B.E. and Barbara
 Norris, Michael
 Norris, Tracey
 Norwood, Deborah and Brian
 Nossaman, Cali
 Nowak, Jacob
 Nye, Alison and Jim
 Oddo, Lorri
 Office Helpline, Inc.
 Ohse, Fred and Julie
 O'Keefe, Becky Ford and Brian
 Olden, Kelsey
 Oldham, Martha
 Olson, David and Heather
 Orlando, Christopher
 Ornburn, Nancy
 Oswald, Kristin
 Otten, Vickie
 Otter, Courtney
 Paradis, Anna and Nathan
 Parkhurst, Kara
 Parkinson, Mary

Paschke, Roger
 Patton Bryant, Donna and Rick
 Pearson, Emily
 Pellett, Mary and David
 Pendry, Mary
 Pering, Holley
 Perkins, Angela
 McCoy, Linda
 Peterson, Amanda
 Phelps, Karen
 Phipps, Nancy
 Pinnell, Catherine Breen
 Pitman, Leticia
 Pittman, Becky
 Platt, David
 Poettker, Shana
 Pope, Maria
 Potter, Lynn and Nancy
 Preston, Alison
 Preut, Cherrie
 Price, Nancy
 Price, Nicole
 Prichard, Keri
 Pugsley, Jennifer
 Quirarte, Debra
 Rabiola, Lori
 Ralston, Susan and James
 Ramer, Danielle
 Ramirez, Carla G. and Steven J.
 Ramler, Peter
 Rapp, Ruthann
 Rapp, Ruthi
 Rea, Julie
 Reagan, Carrie
 Reaver, Rebecca
 Reazin, Joshua
 Reber, David
 Redding, Natalie
 Reed, Melissa
 Reed, Vickie
 Reese, Dr. John and Shirley
 Reese, Erin
 Rego, Steven and Jacki
 Reilly Harden, Angela
 Reilly, Susan
 Reineman, Tamara
 Rials, Julitha
 Rials, Regina
 Rigg, Julie
 Riley, Janet
 Roberts, Linda
 Roberts, Melissa
 Robinson, Katherine
 Robinson, Ruth
 Robinson, Scott
 Robinson, Stephanie
 Rooney, Mary
 Rossillon, Sarah
 Rowland, Angelina
 Ruhl, Becky
 Rury, John
 Rutland, Nikki
 Salazar, Boone
 Saltz, Samantha
 Salvatore, Patricia and Mark
 Scheer, Christina
 Schinnerer, Andrew
 Schmidt-Konkel, Natalie
 and Jeffrey
 Schoeneberg, Melanie
 Schoepf, Teresa
 Schrag, Valerie A.
 Schreiner, Brenda
 Schwartz, Dianne
 Schweer, Brenda and Ron
 Scott, Saro
 Scotten, Jennifer
 Seaman, Emily

Seibel, Lana
 Seidner, Michelle
 Sengchan, Laura
 Severson, Willie
 Shackelford, Susan
 Shellhorn, Amy
 Shelton, Alaina
 Sherman, Jim and
 Jan Sheldon
 Shipman, Jack
 Showman, Carly
 Shultz, Jody
 Simmons, Sheryl
 Sinclair, Jamie
 and Jason
 Sisson, Betty
 Sloan, Thomas J.
 Smith, Ashli
 Smith, Cara
 Smith, Janine
 Smith, Manda
 Smith, Randy
 and Margaret
 Smith, Shelia
 and Ted
 Smith, Twilla
 Sneegas, Ruth
 Snyder, Kathryn
 Solida, Amber
 Souders, Carol
 Speicher, Daniel
 Spencer, Lisa
 Spicer, Shelbi
 Spicer, Ethan
 Spradlin, Joshua
 Spratt, Sharon
 Squires, Ashly
 Stafford, Jacqueline
 Stahl, Megan
 Stancliffe, Jaime
 Staton, Katherine
 Staufner, Gary and Carolyn
 Steele, Kelly
 Steinbacher, Katherin
 Stemmerman, Steven
 Stephens, Ann
 Stevanov, Donald
 Stieben, Kim
 Still, Samantha
 Stogsdill, Maureen
 Stoll, Emili
 Stoll, Stephen
 Stolt, Kelsey
 Stone, Joan and Mark
 Stone, Tammy
 Strauss, Mike and Lisa
 Strawderman, Oather
 Strecker, Stuart
 Stucky, Melissa
 Stussie, Lori
 Sudbeck, Emma
 Summers, Megan
 Swall, Ronald
 Tallman, Joyce
 Taylor, Jessica
 Taylor, Lindsay M.
 Taylor, Marie
 Taylor, Tashya
 Theas, Allison
 Thomas, Dianne
 Thomas, Lynisha
 Thomsen, Mary
 Todd, Samuel
 Torneden-Johnson, Becky
 Trarbach, Cynthia
 Trompeter, Michele
 Troxell, Elizabeth
 True, Judith



Truex, Sarah
 Trujillo, Adrian
 Tuckwin, Gerald and Terry
 Tuel, Leellyn
 Underwood, Peggy
 Urban, Dave and Jackie
 Urish, Rod and Tracy
 Vail, Amanda
 Valencia, Rachel and Adam
 Vanचना, Lorie
 Vancil, Erin
 Vannicola, Debra
 Vertacnik, Wendy
 Vilcek, Robyn
 Viscomi, Jenna
 Wagner, Kathleen
 Waldron, Amy
 Walker, Jeanette and James
 Wallace, Derick
 Waller, Ericka
 Walters, Jennifer
 Walters, Larry
 Walzel, Mary
 Ward, Karen
 Watson, Lori
 Watts, Linda and
 Thad Holcombe
 Weaver, Michele and Billy
 Webb, Angie
 Webber, Ryan
 Wedd, Dirk
 Wedd, Gwenneth
 Wedel, Patrick
 Weisel, Berenice
 Weseman, Vicki
 West, Edward
 Whalen, Carol Beth
 Whisler, Janelle
 White, Margaret
 Whitenight, Katherine
 Wilcken, Wendie
 Wilk, Jennifer
 Wilkins, Sheila
 Willey, Dale and Janice
 Willhite, Kristi L.
 Williams, Barbara
 Williams, Debra
 Williams, Jaclynn
 Williams, Jennifer
 Williams, Kimberly

Williams, Tracy
 Williams, Valeita
 Williamson, Sarah and Joshua
 Willoughby, Sue
 Wilson, Amanda
 Wilson, Angela
 Wilson, Colby
 Wilson, Keith and Melissa
 Wilson, Kristal
 Wilson, William and Linda Kay
 Wims-Campbell, Carolyn
 Wingfield, Melinda
 Winter, Mary and Wint
 Wolf, Larry
 Wolfe, Natalie
 Wondra, Kirsten
 Wood, Amber
 Woodall Routledge, Deborah
 Woods, S.G.
 Woodyard, Dr. George
 and Eleanor
 Woolard, Roberta
 Wormsley, Kea
 Wormsley, Michael
 Wright, Kylee
 Wyatt, Jennifer
 Wycoff, Karen
 Yantzie, Daniel and Jeanne
 Yates, Amy
 Yoder, Amanda
 Young, Kimberly
 Ziegler, Laurie
 Zingo, Jo Anne
 Zylstra, Kate

Thank you, too, to all of our anonymous community and school district donors.

All efforts have been made to make this report as accurate as possible. If you find an error or omission, please accept our apology and notify us at 785-330-1941.

STAFF

Dena Johnston, *Executive Director*
 Jamie Sinclair, *Program Assistant and LEAP Coordinator*
 Mike Strauss, *Program Assistant*

785-330-1941
 www.lawrenceschoolsfoundation.org



BOARD OF TRUSTEES

Gail Vick, *President*
 Scott Morgan, *Vice President*
 Tom Hornbaker, *Treasurer*
 Mark Heider, *Secretary*
 Tim Mock, *LEAP Council Chair*
 Christopher Anderson
 Hank Booth
 Mark Buhler
 Julie Carter

Marilyn Dobski
 Sandra Gault
 Susan Henderson
 Patrick Kelly
 Becca Koester
 Martin Moore
 Darcey Soto
 Anna Stubblefield
 Robin Ward

David Williams
 Brandon Young
 Pam Zenger

Ex-Officio
 Kyle Hayden, *Superintendent*
 Jessica Beeson, *Board of Education*
 Dena Johnston, *Executive Director*

110 McDonald Drive
Lawrence, KS 66044
785-330-1941
www.lawrenceschoolsfoundation.org

